



Massey , Maryland



Dairy

- 1220 Milking
- 130 Dry Cows
- 1400 Replacements
- 38 Million Pounds Milk



Crop Land

•1650 Acres

1230 Irrigated

5 Acres Solar

© 2016 Google

Google earth

Imagery Date: 5/25/2015 39°19'17.52" N 75°48'57.05" W elev 63 ft eye alt 9708 ft

Solar Array

- 5 Acres
- 4,368 Panels
- 1,266,720 Kw Peak Power
- 2 – 500w Inverters
- 2014 – 1.7GWh
- 2015 – 1.72GWh



Why Solar?

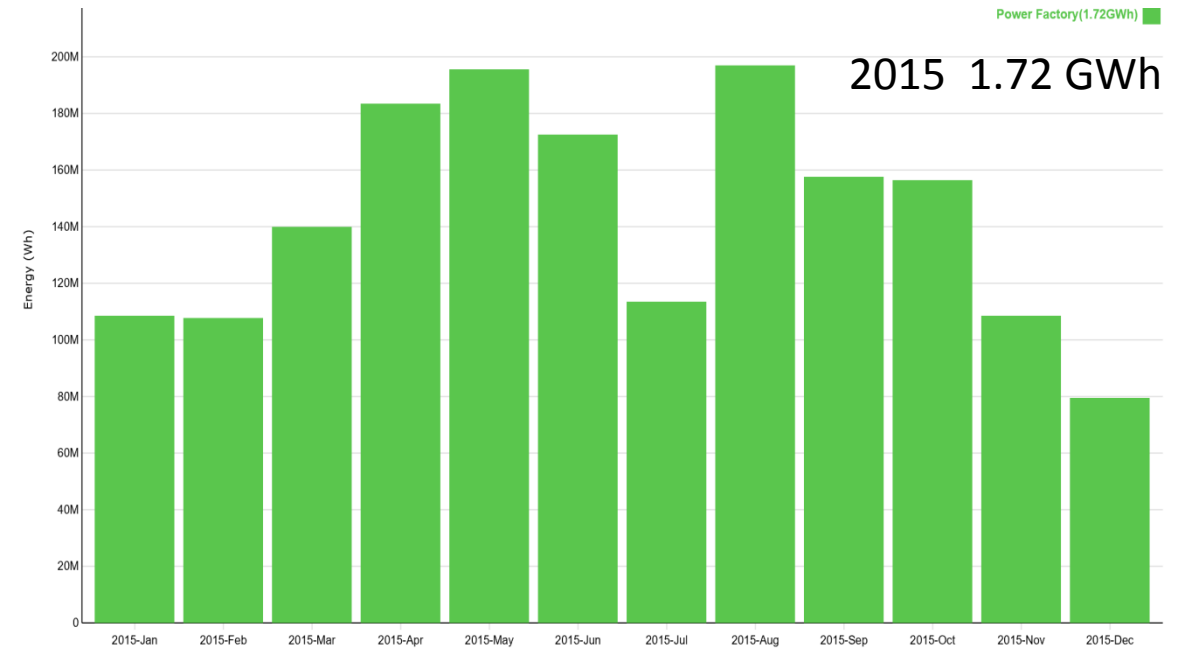
- Electric Usage
- Tax Credits
- Solar Renewable Energy Credits(SREC)
- Financial Help



Electric Usage



- 1,628,450 kWh Usage
- 12 Meters
 - 8 residential
 - 5 other



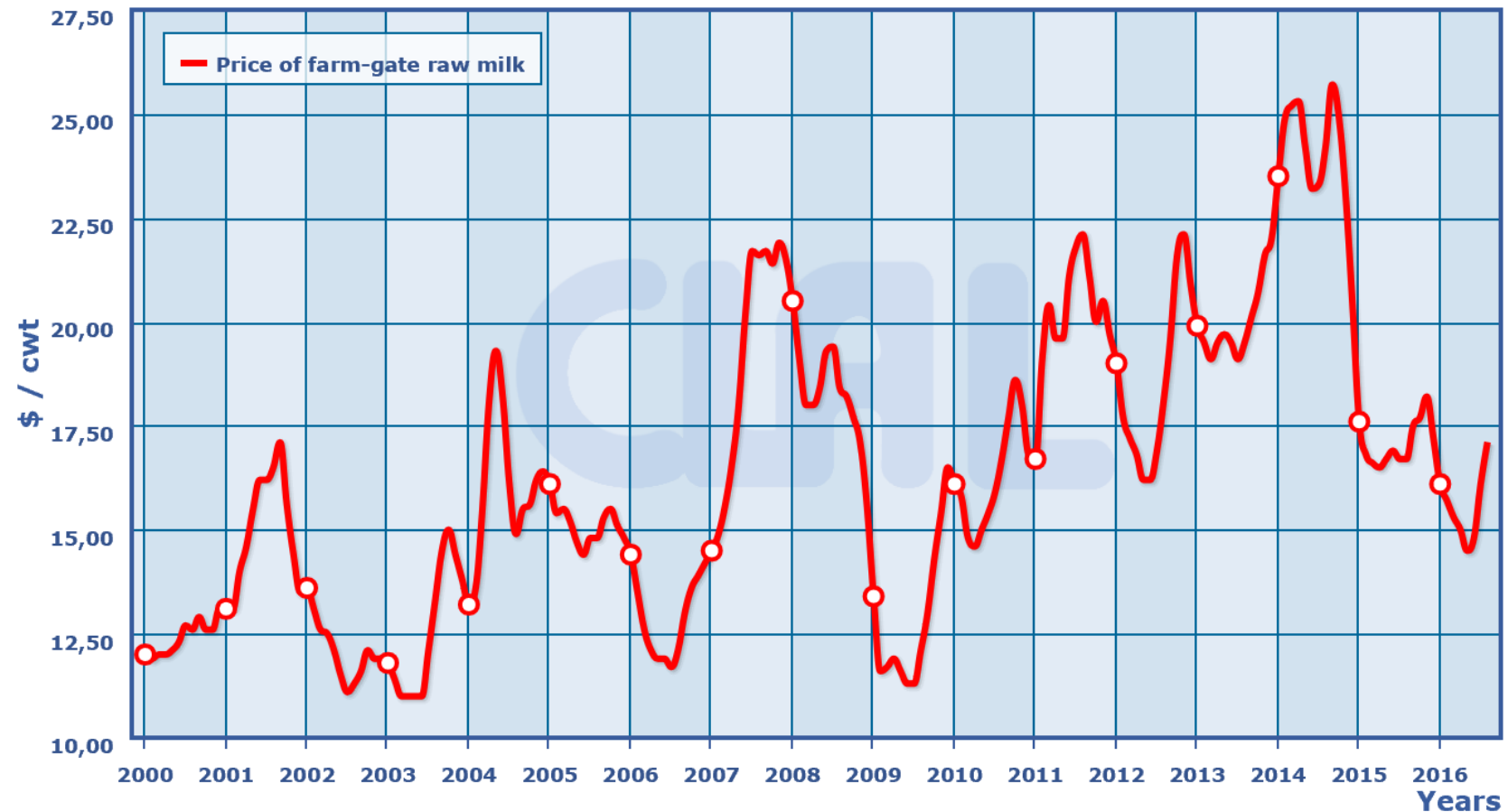
Federal Tax Credits

- 30 % of Project Cost

USA - Historical overview of farm-gate raw milk prices (US \$)

Fluid Grade Milk

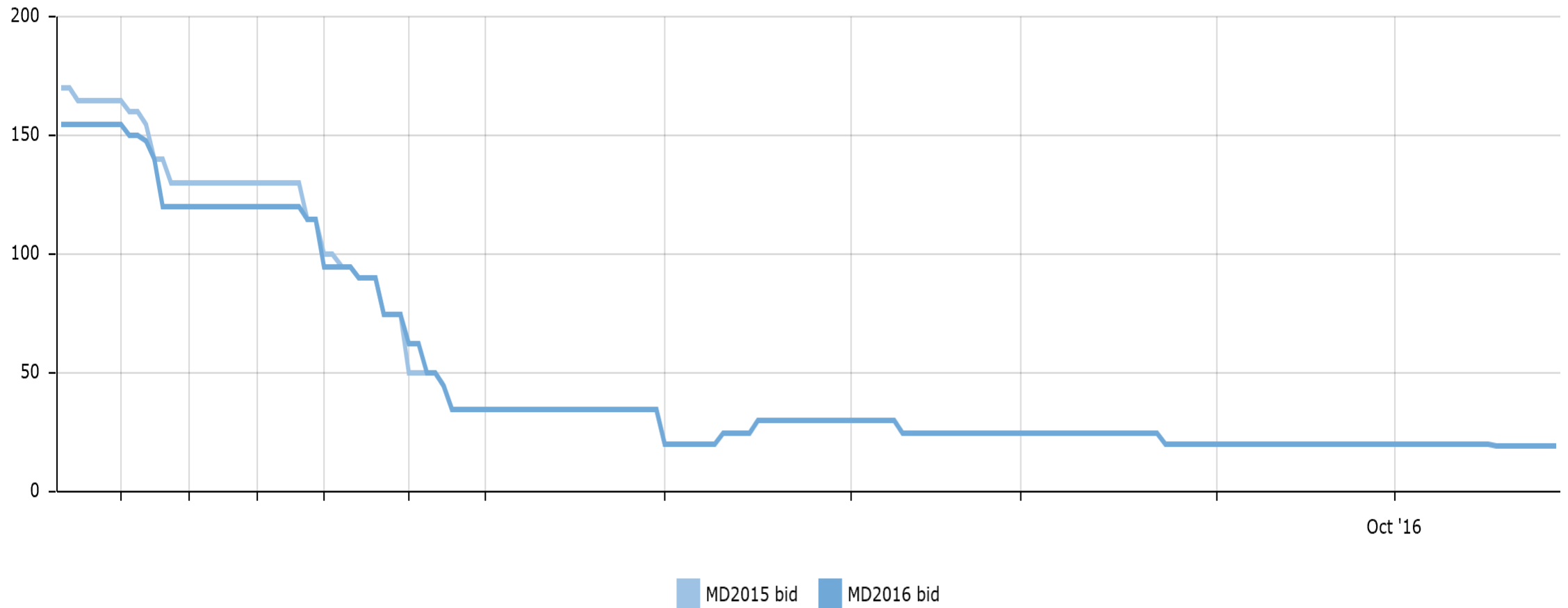
Source: AMS USDA Dairy Markets News



SREC

- 1,700 SREC/Yr

Bid Prices for MD - Last Twelve Months (LTM)



Financial Help

- USDA Reap Grant

Renewable Energy For America Program

Applicants must provide at least 75% of the cost

Maximum amount \$500,000



Issues

- Problems with Utility
 - Minimum Rate
 - Net Meter Rates
 - Billing
- Solar Companies





Thank You