

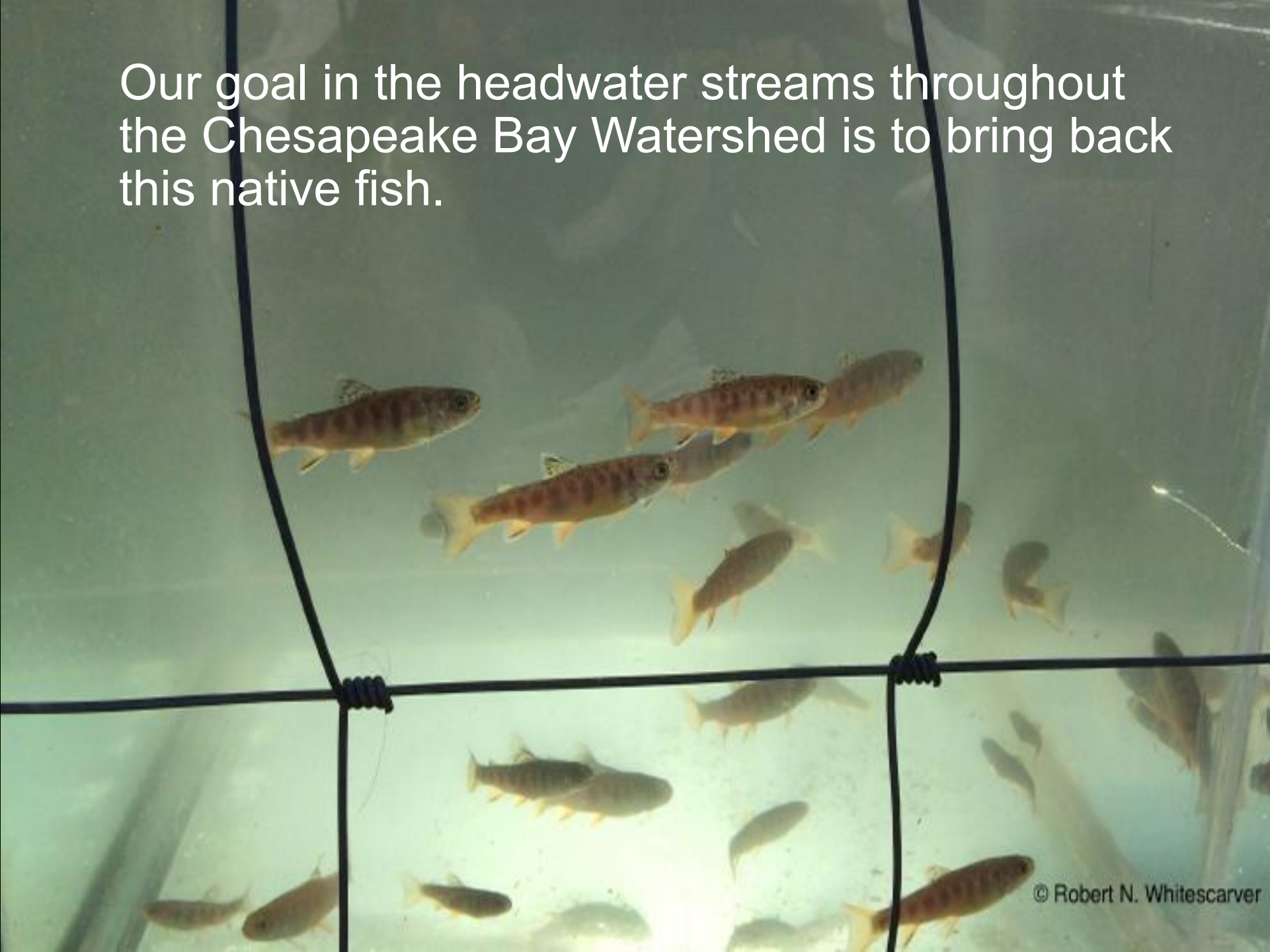


HYDRABED
HB 200

©Whitescarver Photography



Our goal in the headwater streams throughout the Chesapeake Bay Watershed is to bring back this native fish.

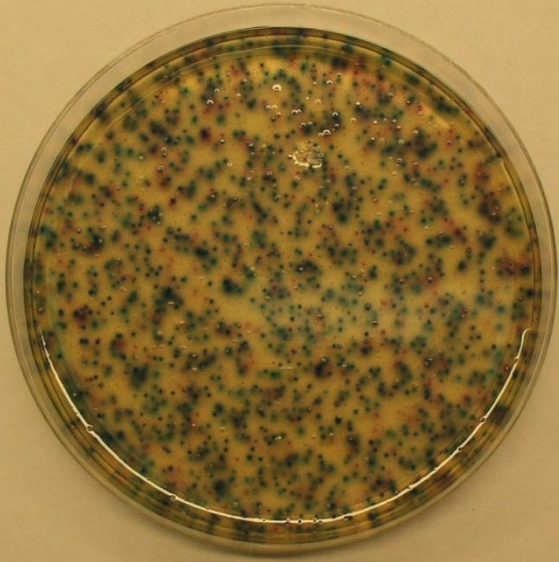




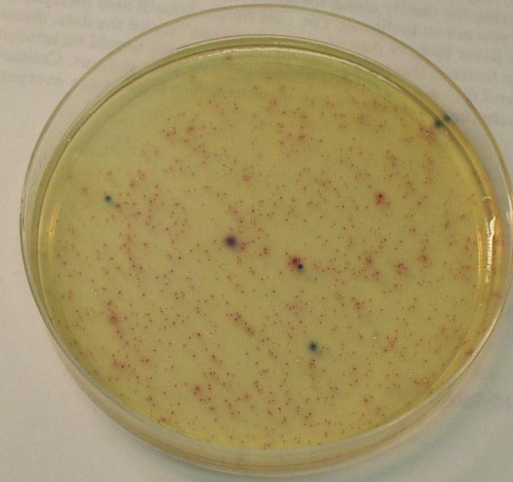




E. Coli



Cattle: 3,850 cfu/100ml



No cattle: 25 cfu/100ml

Virginia standard for human contact in fresh water is 235 cfu/100ml

The bio-security program on your farm is only as good as the worst farm upstream.



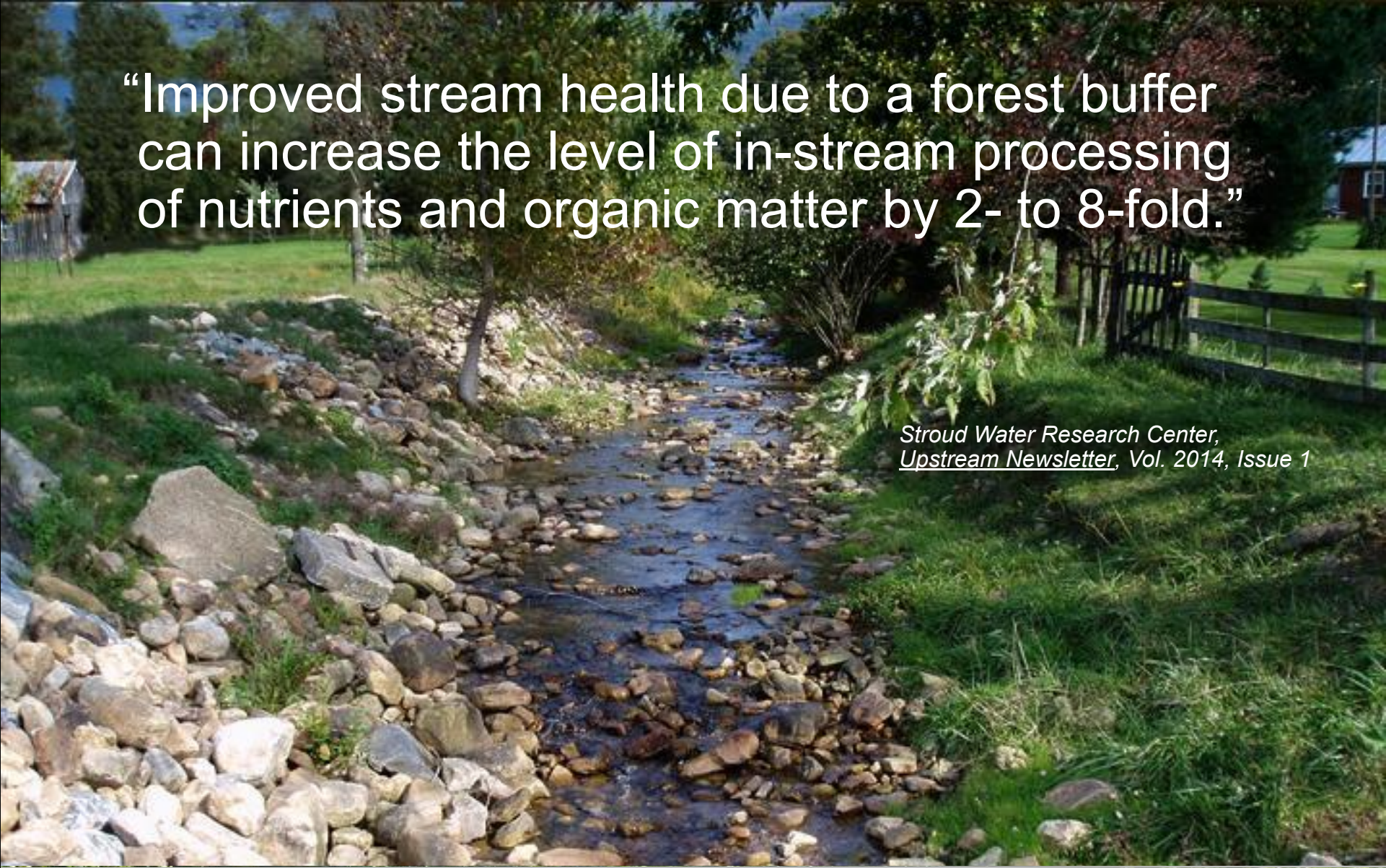












“Improved stream health due to a forest buffer
can increase the level of in-stream processing
of nutrients and organic matter by 2- to 8-fold.”

*Stroud Water Research Center,
Upstream Newsletter, Vol. 2014, Issue 1*



Bobby Whitescarver



Getting More on the Ground